



italtec

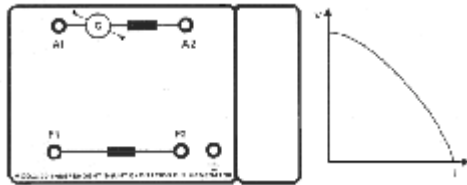
Company with Quality
System Certified by DNV
ISO 9001/2000

E.M.M.S. 0,3kW BRAKES & TORQUE METERS

MOD.3170

Shunt Excitation d.c. Generator 300W (braking generator)

- Nominal voltage: 220V d.c.;
- Excitation voltage: 220V d.c.
- Complete with arms, weights, counterweights and level indicator.
- Coupling type: cog coupling
- Unit type: table-top unit
- Dimensions: LxWxH: 35 x 21 x 19cm;
- Weight: 6,0Kg



MOD.3172

Inertia wheel 0,1/0,3kW

For simulating heavy starting and energy storage.
Design: built into a machine housing with base plate.

- Flywheel mass: approx. 9kg
- Coupling type: cog coupling
- Unit type: table-top unit
- Dimensions: LxWxH: 22 x 33 x 19 cm;
- Weight: 12 kg

MOD.3174

Magnetic powder brake 3Nm

Magnetic powder brake as a mechanical load for torque and rpm detection of electric motors.

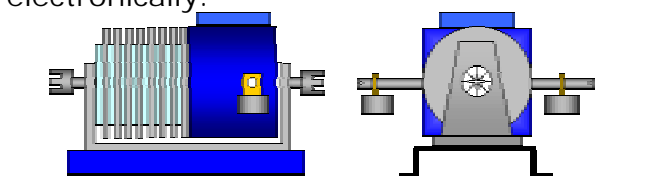
A slight excitation power is required and the full braking torque is available even at standstill.

Torque recording is made using wire strain gauges and speed opto-electronically.

Linked to the machine via a free shaft and with cog coupling sleeve and anti-vibration base plate. External cooling.

Connection: to the control unit by means of a permanently installed 10-core cable
Speed detection: opto-electronically, 60 pulses/rev.

- Maximum torque: 5Nm
- Coupling type: cog coupling
- Unit type: table-top unit
- Dimensions: LxWxH: 16 x 27 x 20cm;
- Weight: 6,0 kg



Copyright © italtec s.r.l. All Rights Reserved

Ci riserviamo di apportare modifiche e migliorie senza preavviso
We reserve the right to change these specifications without notice
Photos et données techniques susceptibles de modifications sans avis

ITALTEC S.R.L. SISTEMI TECNICI DIDATTICI
20090 FIZZONASCO MI (Italy) – Via privata Liguria, 3
Tel. +39 02-90.721.606 Fax. +39-02-90.720.227
e-mail: italtec@italtec.it <http://www.italtec.it>



italtec

Company with Quality
System Certified by DNV
ISO 9001/2000

E.M.M.S. 0,3kW BRAKES & TORQUE METERS



MOD.3180 Electromagnetic Brake

Brake as a mechanical load for machines in the 0,3kW range.

It is used for direct test on motors up to 300W

Continuous rated braking: 300W at 3000rpm;

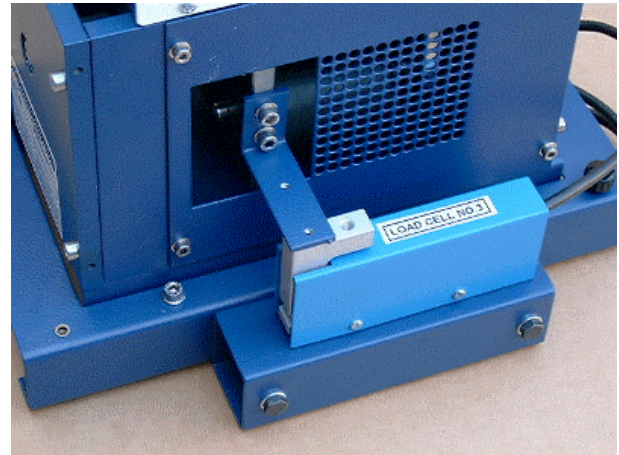
Discontinuous rated braking: 400W at 3000rpm.

The brake is complete with arms, weights, level indicator and disk.

MOD.3180C Torque Meter With Load Cell

This accessory applied to brake MOD.3180 or MOD.3170, allows to measure the motor torque during the test and to read the value on the digital instrument, calibrates in kgm. or Nm.

A proportional output is provided for torque reading also useful for data transmission and acquisition.



MOD.3181 Electrodynamometer Module

This module allows a variable mechanical load for direct test on all machines of our system.

Electrodynamometer includes load cell system MOD.3180C so that torque is readable on a digital indicator, which shows values directly in 0-3Nm range.

Electrodynamometer can be mechanically matched to all machines.

Weight: 8kg.

Copyright © italtec s.r.l. All Rights Reserved

Ci riserviamo di apportare modifiche e migliorie senza preavviso
We reserve the right to change these specifications without notice
Photos et données techniques susceptibles de modifications sans avis

ITALTEC S.R.L. SISTEMI TECNICI DIDATTICI
20090 FIZZONASCO MI (Italy) – Via privata Liguria, 3
Tel. +39 02-90.721.606 Fax. +39-02-90.720.227
e-mail: italtec@italtec.it <http://www.italtec.it>