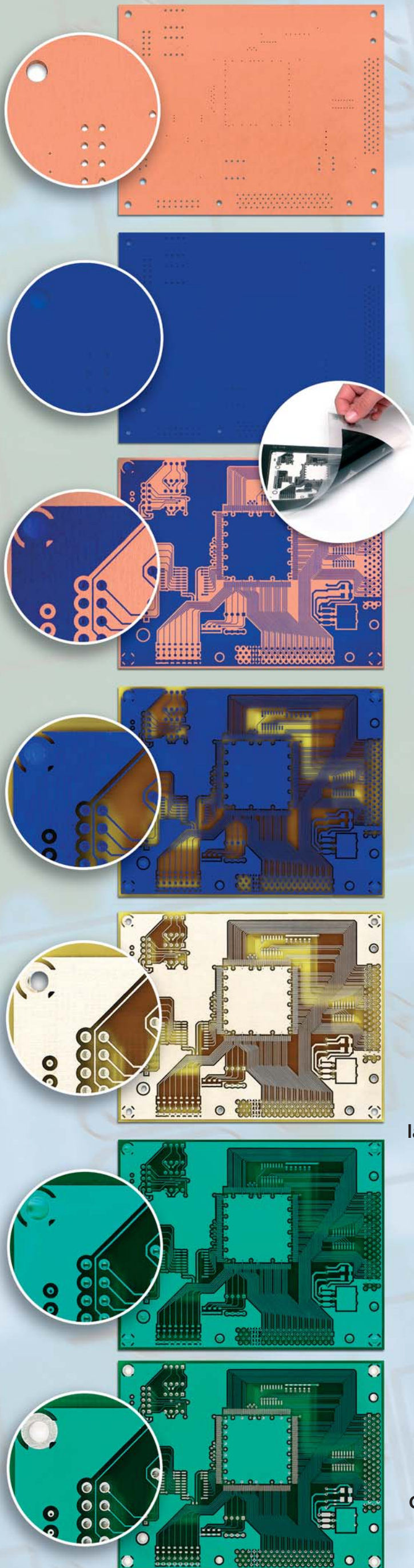


Professional PCB prototyping including galvanic PTH soldermask (Components printing) upgradeable to multilayer



(Basisline)



raw material cut to size with (Ne-Cut)



CNC-drilling (BUNGARD CCD)



brush cleaning (RBM 300)



galvanic PTH (Compacta L30 ABC)



brush cleaning (RBM 300)



lamination of etch resist (RLM 419p)



← film production with Bungard Filmstar

vacuum exposure (Hellas)



spray developing (Splash / Jet 34D)



spray etching stripping of etch resist (Splash Center)



brush cleaning (RBM 300)



chemical tinning (EG 01/02 / SUR-TIN)



lamination of solder mask (RLM 419p)



exposure of solder mask (Hellas)



spray developing (Splash / Jet 34D)



curing of soldermask (Hellas or hot air oven)



CNC-V-cut or CNC-routing (Bungard CCD)

