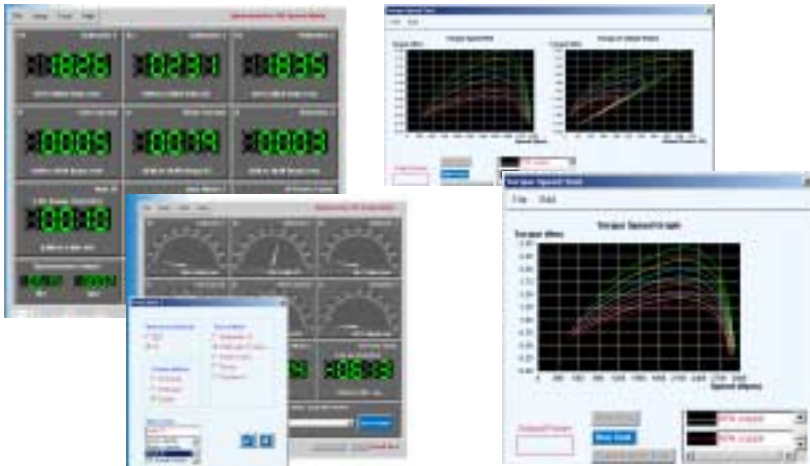




italtec

MULTI-CHANNEL I/O UNIT 68-500



Features

- Computer based machines testing system
- Display up to nine functions
- Meter choice from ten functions
- Analogue or digital virtual meter
- User definable meters
- Real-time plotting
- Four separate graph plots simultaneously
- Multi-graph plotting, eight plots per graph
- Data export facility
- Browser based software

Designed for use with the EMMS system where a number of measuring instruments are generally required to evaluate the system behaviour. Used with a PC, the software provides on-screen instrumentation of ac and dc voltmeters and ammeters, dc wattmeter, single and three phase wattmeter, frequency and phase meter.

- Virtual instrumentation software
- Three voltage and three current inputs
- Six isolated channels
- Ac and dc measurements

The Windows based software runs within a web browser with the advantage of having access to curriculum and data files via an Internet system.

The set-up of an instrument(s) makes available the indicated values to be saved in files and if required exported to spreadsheet software packages, to enable the results to be evaluated, manipulated or plotted.

A very powerful software features is the ability to plot in real-time electrical machines torque/speed curves and associated characteristics such as output versus torque and efficiency versus output power.

Up to four automatic plots can be run simultaneously with all measured data available for export to spreadsheet software.

Graphical results can be printed from the automatic plotting feature.

Curriculum coverage

Electrical Technology

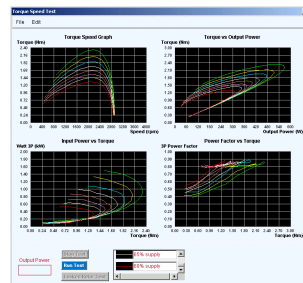
- Electrical Fundamentals
- Alternating Current
- Three Phase Circuits
- Single Phase Transformers
- Three Phase Transformers

Electrical machines – ac/dc motors and generators

- The Separately Excited dc Motor
- Series Shunt & Compound dc Motors
- Separately Excited, Shunt and Compound
- Dc Generators, Cumulative and Differential
- The Universal Motor
- Ac Induction Motors
- Single Phase Induction Motors
- Three Phase Synchronous Motor
- Three Phase Synchronous Generators



Virtual Instrumentation with a mix of analogue and digital readout



Four plots generated by the automatic plotting tool showing families of curves at different levels of input power supply

EMMS is a complete system that converts the majority of the curriculum requirements of Electrical Power & Machines. It is based on a series of industrial machines of nominally 250 – 300W rating which have been purpose designed to display characteristics typical of larger machines.

The trainer is complete with the necessary power supplies, loading and testing devices and PC virtual instrumentation for metering of all the systems values.

Ci riserviamo il diritto di apportare senza preavviso modifiche e migliorie tecniche alle nostre apparecchiature.
We reserve the right to change these specifications without notice

ITALTEC S.R.L. SISTEMI TECNICI DIDATTICI
20090 FIZZONASCO MI (Italy) – Via Privata Liguria, 3
Tel. +39 02-90.721.606 Fax. +39-02-90.720.227
e-mail: italtec@italtec.it <http://www.italtec.it>